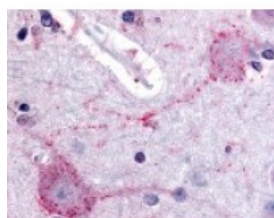




PCSK6 Antibody

CATALOG NUMBER: 48-339



Immunohistochemistry staining of PCSK6
in brain cortex tissue using PCSK6
Antibody.

Specifications

SPECIES REACTIVITY:	Gorilla, Human
TESTED APPLICATIONS:	ELISA, IHC
APPLICATIONS:	PCSK6 antibody can be used in ELISA, and immunohistochemistry starting at 20 ug/mL.
USER NOTE:	Optimal dilutions for each application to be determined by the researcher.
SPECIFICITY:	BLAST analysis of the peptide immunogen showed no homology with other human proteins.
IMMUNOGEN:	PCSK6 antibody was raised against a peptide located near the internal domain of PCSK6 (Human).
HOST SPECIES:	Rabbit

Properties

PURIFICATION:	Immunoaffinity Chromatography
PHYSICAL STATE:	Liquid
BUFFER:	PBS, 0.1% sodium azide.
STORAGE CONDITIONS:	PCSK6 antibody should be stored long term (months) at -80 °C and short term (days) at 4 °C. As with all antibodies avoid freeze/thaw cycles.
CLONALITY:	Polyclonal
CONJUGATE:	Unconjugated

Additional Info

ALTERNATE NAMES:	PCSK6, PACE4, SPC4
ACCESSION NO.:	P29122
PROTEIN GI NO.:	129542
OFFICIAL SYMBOL:	PCSK6
GENE ID:	5046

Background

BACKGROUND: PACE4 is a Serine S8 type protease that cleaves precursor proteins at paired basic amino acid processing sites.

Several PACE4 substrates have been identified, including transforming growth factor beta-related proteins, proalbumin and von Willebrand factor. At least eight alternatively spliced transcript variants encoding different isoforms have been reported. In mouse, PACE4 has been shown to increase tumor cell invasiveness, and thus enhance tumor progression.

FOR RESEARCH USE ONLY

December 13, 2016