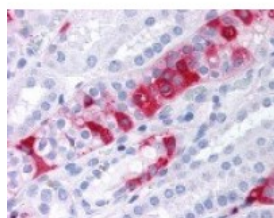




## SGK3 Antibody

CATALOG NUMBER: 48-323



Immunohistochemistry staining of SGK3 in kidney tissue using SGK3 Antibody.

### Specifications

<b>SPECIES REACTIVITY:</b>	Gibbon, Gorilla, Human, Monkey, Orangutan
<b>TESTED APPLICATIONS:</b>	ELISA, IHC
<b>APPLICATIONS:</b>	SGK3 antibody can be used in immunohistochemistry starting at 14 - 28 ug/mL.
<b>USER NOTE:</b>	Optimal dilutions for each application to be determined by the researcher.
<b>SPECIFICITY:</b>	BLAST analysis of the peptide immunogen showed no homology with other human proteins, except SGK1 (59%).
<b>IMMUNOGEN:</b>	SGK3 antibody was raised against a peptide located in the C-Terminal domain of SGK3 (Human).
<b>HOST SPECIES:</b>	Rabbit

### Properties

<b>PURIFICATION:</b>	Immunoaffinity Chromatography
<b>PHYSICAL STATE:</b>	Liquid
<b>BUFFER:</b>	PBS, 0.1% sodium azide.
<b>STORAGE CONDITIONS:</b>	SGK3 antibody should be stored long term (months) at -80 °C and short term (days) at 4 °C. As with all antibodies avoid freeze/thaw cycles.
<b>CLONALITY:</b>	Polyclonal
<b>CONJUGATE:</b>	Unconjugated

### Additional Info

<b>ALTERNATE NAMES:</b>	SGK3, CISK, SGKL
<b>ACCESSION NO.:</b>	Q96BR1
<b>PROTEIN GI NO.:</b>	28558163
<b>OFFICIAL SYMBOL:</b>	SGK3
<b>GENE ID:</b>	23678

### Background

**BACKGROUND:** SGKL/SGK3, also known as CISK for cytokine-independent survival kinase, is a SGK type protein kinase. The

protein contains a lipid-binding phox homology (PX) domain, which is required for targeting SGKL/SGK3 protein to the endosomal compartment. SGKL/SGK3 functions downstream of the phosphoinositide 3-kinase (PI3K) cascade and has been implicated in cell survival. The protein has been shown to be phosphorylated and activated by 3-phosphoinositide-dependent protein kinase 1 (PDK1), and to a lesser extent insulin-like growth factor-1, in vitro. Activated SGKL/SGK3 has been shown to phosphorylate glycogen synthase kinase 3 beta (GSK-3beta) in vitro.

---

**FOR RESEARCH USE ONLY**

December 13, 2016