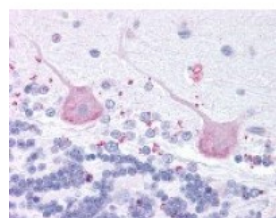




MCHR2 Antibody

CATALOG NUMBER: 48-139



Immunohistochemistry staining of MCHR2
in cerebellum tissue using MCHR2
Antibody.

Specifications

SPECIES REACTIVITY:	Human
TESTED APPLICATIONS:	ELISA, IHC
APPLICATIONS:	MCHR2 antibody can be used in immunohistochemistry starting at 50 ug/mL.
USER NOTE:	Optimal dilutions for each application to be determined by the researcher.
SPECIFICITY:	BLAST analysis of the peptide immunogen showed no homology with other human proteins.
IMMUNOGEN:	MCHR2 antibody was raised against a peptide located in the C-Terminal cytoplasmic domain of MCHR2 (Human).
HOST SPECIES:	Rabbit

Properties

PURIFICATION:	Immunoaffinity Chromatography
PHYSICAL STATE:	Liquid
BUFFER:	PBS, 0.1% sodium azide.
STORAGE CONDITIONS:	MCHR2 antibody should be stored long term (months) at -80 °C and short term (days) at 4 °C. As with all antibodies avoid freeze/thaw cycles.
CLONALITY:	Polyclonal
CONJUGATE:	Unconjugated

Additional Info

ALTERNATE NAMES:	MCHR2, G protein-coupled receptor slt, GPRv17, GPR145, G protein-coupled receptor 145, G-protein coupled receptor 145, MCH receptor 2, MCHR-2, MCH-2R, MCH-R2, MCH2, Mch2 receptor, SLT receptor, MCH2R, SLT
ACCESSION NO.:	Q969V1
PROTEIN GI NO.:	34098673
OFFICIAL SYMBOL:	MCHR2
GENE ID:	84539

Background

BACKGROUND: MCHR2/GPR145 is a Melanin-Concentrating Hormone Receptor. Melanin-concentrating hormone plays an important role in the control of feeding behaviors and energy metabolism. Unlike MCH1, MCH2 signaling is not sensitive to pertussis toxin, and MCH2 cannot reduce forskolin-stimulated cAMP production.

FOR RESEARCH USE ONLY

December 13, 2016