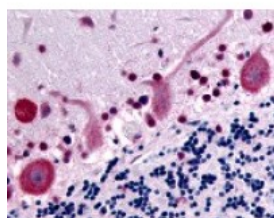




GPR32 Antibody

CATALOG NUMBER: 48-134



Immunohistochemistry staining of GPR32
in cerebellum tissue using GPR32
Antibody.

Specifications

SPECIES REACTIVITY:	Human
TESTED APPLICATIONS:	ELISA, IHC
APPLICATIONS:	GPR32 antibody can be used in immunohistochemistry starting at 2.6 ug/mL.
USER NOTE:	Optimal dilutions for each application to be determined by the researcher.
SPECIFICITY:	BLAST analysis of the peptide immunogen showed no homology with other human proteins.
IMMUNOGEN:	GPR32 antibody was raised against a peptide located in the 3rd cytoplasmic domain of GPR32 (Human).
HOST SPECIES:	Rabbit

Properties

PURIFICATION:	Immunoaffinity Chromatography
PHYSICAL STATE:	Liquid
BUFFER:	PBS, 0.1% sodium azide.
STORAGE CONDITIONS:	GPR32 antibody should be stored long term (months) at -80 °C and short term (days) at 4 °C. As with all antibodies avoid freeze/thaw cycles.
CLONALITY:	Polyclonal
CONJUGATE:	Unconjugated

Additional Info

ALTERNATE NAMES:	GPR32, G protein-coupled receptor 32, Resolvin D1 receptor, RVDR1
ACCESSION NO.:	O75388
PROTEIN GI NO.:	6831552
OFFICIAL SYMBOL:	GPR32
GENE ID:	2854

Background

BACKGROUND:	GPR32 an Orphan-A GPCR with an unknown ligand.
--------------------	--

