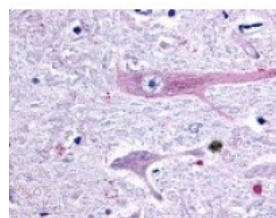




## GPR75 Antibody

CATALOG NUMBER: 48-131



Immunohistochemistry staining of GPR75  
in brain, medulla tissue using GPR75  
Antibody.

### Specifications

<b>SPECIES REACTIVITY:</b>	Gorilla, Human, Monkey
<b>TESTED APPLICATIONS:</b>	IHC
<b>APPLICATIONS:</b>	GPR75 antibody can be used in ELISA, Western Blot, immunohistochemistry starting at 5 ug/mL, and immunofluorescence starting at 10 ug/mL.
<b>USER NOTE:</b>	Optimal dilutions for each application to be determined by the researcher.
<b>SPECIFICITY:</b>	BLAST analysis of the peptide immunogen showed no homology with other human proteins.
<b>IMMUNOGEN:</b>	GPR75 antibody was raised against a peptide located in the 3rd cytoplasmic domain of GPR75 (Human).
<b>HOST SPECIES:</b>	Rabbit

### Properties

<b>PURIFICATION:</b>	Immunoaffinity Chromatography
<b>PHYSICAL STATE:</b>	Liquid
<b>BUFFER:</b>	PBS, 0.1% sodium azide.
<b>STORAGE CONDITIONS:</b>	GPR75 antibody should be stored long term (months) at -80 °C and short term (days) at 4 °C. As with all antibodies avoid freeze/thaw cycles.
<b>CLONALITY:</b>	Polyclonal
<b>CONJUGATE:</b>	Unconjugated

### Additional Info

<b>ALTERNATE NAMES:</b>	GPR75, G protein-coupled receptor 75, GPR-chr2, WI31133, GPRchr2, WI-31133
<b>ACCESSION NO.:</b>	O95800
<b>PROTEIN GI NO.:</b>	67460986
<b>OFFICIAL SYMBOL:</b>	GPR75
<b>GENE ID:</b>	10936

### Background

**BACKGROUND:** GPR75 is an Orphan-A GPCR with an unknown ligand.

---

**FOR RESEARCH USE ONLY**

December 13, 2016