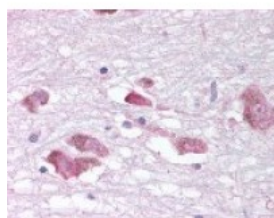




MCHR1 Antibody

CATALOG NUMBER: 48-128



Immunohistochemistry staining of MCHR1
in brain, substantia nigra tissue using
MCHR1 Antibody.

Specifications

SPECIES REACTIVITY:	Bovine, Chimpanzee, Dog, Gibbon, Human, Monkey
TESTED APPLICATIONS:	ELISA, IHC
APPLICATIONS:	MCHR1 antibody can be used in ELISA, and immunohistochemistry starting at 15 ug/mL.
USER NOTE:	Optimal dilutions for each application to be determined by the researcher.
SPECIFICITY:	BLAST analysis of the peptide immunogen showed no homology with other human proteins.
IMMUNOGEN:	MCHR1 antibody was raised against a peptide located in the C-Terminal domain of MCHR1 (Human).
HOST SPECIES:	Rabbit

Properties

PURIFICATION:	Immunoaffinity Chromatography
PHYSICAL STATE:	Liquid
BUFFER:	PBS, 0.1% sodium azide.
STORAGE CONDITIONS:	MCHR1 antibody should be stored long term (months) at -80 °C and short term (days) at 4 °C. As with all antibodies avoid freeze/thaw cycles.
CLONALITY:	Polyclonal
CONJUGATE:	Unconjugated

Additional Info

ALTERNATE NAMES:	MCHR1, G-protein coupled receptor 24, G protein-coupled receptor 24, GPR24, MCH-1R, MCH receptor 1, MCH-R1, MCH1R, Somatostatin-like receptor 1, MCH 1 receptor, MCHR, SLC-1, MCHR-1, SLC1
ACCESSION NO.:	Q99705
PROTEIN GI NO.:	33860175
OFFICIAL SYMBOL:	MCHR1
GENE ID:	2847

Background

BACKGROUND:

MCHR1 is a Melanin-Concentrating Hormone Receptor that binds MCH to regulate nutritional homeostasis, including feeding and body adiposity. The receptor also functions in sensory perception and integration of smell and gustatory inputs, as well as in emotion and memory.

FOR RESEARCH USE ONLY

December 13, 2016