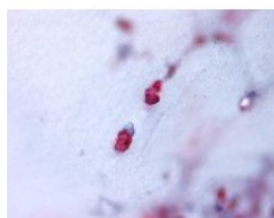




Aggrecan 1 Antibody

CATALOG NUMBER: 48-127



Immunohistochemistry staining of
Aggrecan 1 in bone, cartilage tissue using
Aggrecan 1 Antibody.

Specifications

SPECIES REACTIVITY:	Gorilla, Hamster, Human, Monkey, Pig
TESTED APPLICATIONS:	IHC
APPLICATIONS:	Aggrecan 1 antibody can be used in ELISA, Western Blot, immunohistochemistry starting at 1:100, and flow cytometry.
USER NOTE:	Optimal dilutions for each application to be determined by the researcher.
SPECIFICITY:	BLAST analysis of the peptide immunogen showed no homology with other human proteins, except NCAN (56%).
IMMUNOGEN:	Aggrecan 1 antibody was raised against a peptide located in the N-Terminal domain of Aggrecan 1 (Human).
HOST SPECIES:	Rabbit

Properties

PURIFICATION:	Unpurified
PHYSICAL STATE:	Liquid
BUFFER:	PBS, 0.1% sodium azide.
STORAGE CONDITIONS:	Aggrecan 1 antibody should be stored long term (months) at -80 °C and short term (days) at 4 °C. As with all antibodies avoid freeze/thaw cycles.
CLONALITY:	Polyclonal
CONJUGATE:	Unconjugated

Additional Info

ALTERNATE NAMES:	ACAN, AGCAN, Aggrecan core protein, Acg1, Aggrecan, CSPG1, CSPGCP, CSPCP, AGC1, Aggrecan 1, Large aggregating proteoglycan, MSK16, SEDK, MCSPG
ACCESSION NO.:	P16112
PROTEIN GI NO.:	129886
OFFICIAL SYMBOL:	ACAN
GENE ID:	176

Background

BACKGROUND: AggreCAN Core Protein ESTs have been isolated from lung, uterus, brain, colon, bone, adrenal, stomach, breast, liver/spleen, fetal lung, fetal testis, and fetal B-cell libraries.

FOR RESEARCH USE ONLY

December 13, 2016