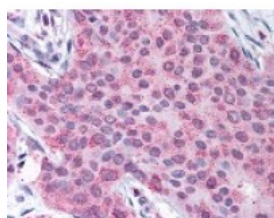




MMP13 Antibody

CATALOG NUMBER: 48-126



Immunohistochemistry staining of MMP13
in breast carcinoma tissue using MMP13
Antibody.

Specifications

SPECIES REACTIVITY:	Gibbon, Gorilla, Human
TESTED APPLICATIONS:	IHC
APPLICATIONS:	MMP13 antibody can be used in immunohistochemistry starting at 1:50.
USER NOTE:	Optimal dilutions for each application to be determined by the researcher.
SPECIFICITY:	BLAST analysis of the peptide immunogen showed no homology with other human proteins.
IMMUNOGEN:	MMP13 antibody was raised against a peptide located in the C-Terminal domain of MMP13 (Human).
HOST SPECIES:	Rabbit

Properties

PURIFICATION:	Immunoaffinity Chromatography
PHYSICAL STATE:	Liquid
BUFFER:	PBS, 0.1% sodium azide.
STORAGE CONDITIONS:	Store MMP13 antibody at 4 °C for short term applications. For long term storage, aliquot and -20 °C.
CLONALITY:	Polyclonal
CONJUGATE:	Unconjugated

Additional Info

ALTERNATE NAMES:	MMP13, Collagenase 3, Matrix metalloproteinase-13, Interstitial collagenase, MANDP1, MMP-13, CLG3
ACCESSION NO.:	P45452
PROTEIN GI NO.:	1168998
OFFICIAL SYMBOL:	MMP13
GENE ID:	4322

Background

BACKGROUND: MMP13 is a Metallopeptidase M10A type protease. Metalloproteinase 13/Collagenase 3 (MMP13) was originally identified in breast carcinoma and has since been documented in a variety of tumors including

chondrosarcomas, basal cell carcinoma, and malignant melanoma. In addition it has been detected in inflammatory diseases such as atherosclerosis, in wound healing, and in destructive joint diseases such OA and RA. MMP13 degrades the native helix of several types of fibrillar collagen, and extracellular matrix proteins in vitro.

FOR RESEARCH USE ONLY

December 13, 2016