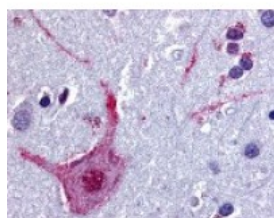




CHRM3 Antibody

CATALOG NUMBER: 48-118



Immunohistochemistry staining of CHRM3
in brain cortex tissue using CHRM3
Antibody.

Specifications

SPECIES REACTIVITY:	Bat, Bovine, Chimpanzee, Dog, Gibbon, Gorilla, Hamster, Horse, Human, Monkey, Mouse, Orangutan, Pig, Rat, Sheep
TESTED APPLICATIONS:	ELISA, IHC
APPLICATIONS:	CHRM3 antibody can be used in immunohistochemistry starting at 20 ug/mL.
USER NOTE:	Optimal dilutions for each application to be determined by the researcher.
SPECIFICITY:	BLAST analysis of the peptide immunogen showed no homology with other human proteins.
IMMUNOGEN:	CHRM3 antibody was raised against a peptide located in the 3rd cytoplasmic domain of CHRM3 (Human).
HOST SPECIES:	Rabbit

Properties

PURIFICATION:	Immunoaffinity Chromatography
PHYSICAL STATE:	Liquid
BUFFER:	PBS, 0.1% sodium azide.
STORAGE CONDITIONS:	CHRM3 antibody should be stored long term (months) at -80 °C and short term (days) at 4 °C. As with all antibodies avoid freeze/thaw cycles.
CLONALITY:	Polyclonal
CONJUGATE:	Unconjugated

Additional Info

ALTERNATE NAMES:	CHRM3, M3, Muscarinic receptor M3, Muscarinic M3 receptor, EGBRS, HM3, M3 muscarinic receptor
ACCESSION NO.:	P20309
PROTEIN GI NO.:	113125
OFFICIAL SYMBOL:	CHRM3
GENE ID:	1131

Background

BACKGROUND:

Muscarinic acetylcholine receptor 3 is an Acetylcholine Receptor that controls smooth muscle contraction by mediating phosphoinositide hydrolysis and Ca^{2+} mobilization. Activation of this receptor causes secretion in glandular tissues. Mouse studies suggest that the M3 receptor may play a role in appetite stimulation and food intake.

FOR RESEARCH USE ONLY

December 13, 2016