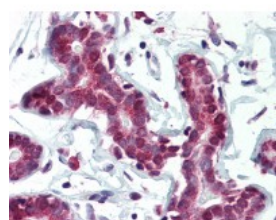




SET7 Antibody [S4E5]

CATALOG NUMBER: 48-041



Human breast tissue stained with SETD7
Antibody at 5 ug/mL followed by
biotinylated anti-mouse IgG secondary
antibody, alkaline phosphatase-streptavidin
and chromogen.

Specifications

SPECIES REACTIVITY:	Human
TESTED APPLICATIONS:	ELISA, IHC, WB
APPLICATIONS:	SET7 antibody can be used in immunohistochemistry starting at 10 ug/mL.
USER NOTE:	Optimal dilutions for each application to be determined by the researcher.
IMMUNOGEN:	Recombinant human SET7/9 protein
HOST SPECIES:	Mouse

Properties

PURIFICATION:	Protein G Column
PHYSICAL STATE:	Liquid
BUFFER:	PBS, pH 7.4, 0.1% sodium azide
STORAGE CONDITIONS:	SET7 antibody should be stored long term (months) at -20 °C and short term (weeks) at 4 °C. As with all antibodies avoid freeze/thaw cycles.
CLONALITY:	Monoclonal
ISOTYPE:	IgG2b,k
CONJUGATE:	Unconjugated

Additional Info

ALTERNATE NAMES:	SETD7, Lysine N-methyltransferase 7, KIAA1717, SET9, H3-K4-HMTase SETD7, KMT7, SET7, SET7/9
ACCESSION NO.:	Q8WTS6
PROTEIN GI NO.:	25091217
OFFICIAL SYMBOL:	SETD7
GENE ID:	80854

FOR RESEARCH USE ONLY

December 13, 2016