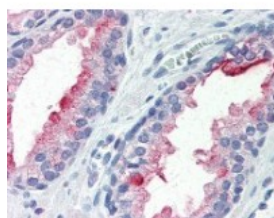




PSMA Antibody [Y-PSMA2]

CATALOG NUMBER: 48-037



Human prostate tissue stained with PSMA Antibody at 10 ug/mL followed by biotinylated anti-mouse IgG secondary antibody, alkaline phosphatase-streptavidin and chromogen.

Specifications

APPLICATIONS:	PSMA antibody can be used in immunohistochemistry starting at 20 ug/mL.
USER NOTE:	Optimal dilutions for each application to be determined by the researcher.
SPECIFICITY:	Recognizes human PSMA expressed LNCap cell lines. Little or no cross-reactivity to benign prostate hyperplasia (BPH) or to normal prostatic tissue.
IMMUNOGEN:	Crude membrane protein preparation from pooled prostate malignant carcinoma from China.
HOST SPECIES:	Mouse

Properties

PURIFICATION:	Protein G Column
PHYSICAL STATE:	Liquid
BUFFER:	PBS, pH 7.0
STORAGE CONDITIONS:	PSMA antibody should be stored long term (months) at -20 °C and short term (weeks) at 4 °C. As with all antibodies avoid freeze/thaw cycles.
CLONALITY:	Monoclonal
ISOTYPE:	IgG2b,k
CONJUGATE:	Unconjugated

Additional Info

ALTERNATE NAMES:	FOLH1, Folate hydrolase 1, GCP2, Glutamate carboxypeptidase II, Folate hydrolase, GCP2, NAALAD1, NAALADase, NAALADase I, PSM, FGCP, FOLH, Glutamate carboxylase II, Glutamate carboxypeptidase 2, MGCP, PSMA
ACCESSION NO.:	Q04609
PROTEIN GI NO.:	548615
OFFICIAL SYMBOL:	FOLH1
GENE ID:	2346

