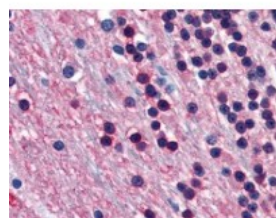




NSE Antibody [NSE-P1]

CATALOG NUMBER: 48-035



Human cerebellum tissue stained with NSE Antibody at 20 ug/mL followed by biotinylated anti-mouse IgG secondary antibody, alkaline phosphatase-streptavidin and chromogen.

Specifications

SPECIES REACTIVITY:	Human
TESTED APPLICATIONS:	ELISA, IHC, WB
APPLICATIONS:	NSE antibody can be used in immunohistochemistry starting at 5 - 10 ug/mL.
USER NOTE:	Optimal dilutions for each application to be determined by the researcher.
SPECIFICITY:	Anti neuron-specific enolase 1 (NSE-P1, ENO1, Enolase 1, 2-Phospho-D-Glycerate Hydrolase, alpha enolase, ay) is an 80 kD protein and one of the five isozymes of enolase, a glycolytic enzyme catalyzing the reaction pathway between 2 phospho glycerate ...
IMMUNOGEN:	Enolase of human origin
HOST SPECIES:	Mouse

Properties

PURIFICATION:	Protein G Column
PHYSICAL STATE:	Liquid
BUFFER:	PBS, 0.02% sodium azide.
STORAGE CONDITIONS:	Store NSE antibody at -20 °C. Aliquot to avoid freeze/thaw cycles.
CLONALITY:	Monoclonal
ISOTYPE:	IgG1
CONJUGATE:	Unconjugated

Additional Info

ALTERNATE NAMES:	ENO2, Enolase 2, Enolase 2 (gamma, neuronal), Neurone-specific enolase, Gamma-enolase, Neural enolase, Neuron specific gamma enolase, Neuron-specific enolase, NSE
ACCESSION NO.:	P09104
PROTEIN GI NO.:	20981682

OFFICIAL SYMBOL: ENO2

GENE ID: 2026

Background

FOR RESEARCH USE ONLY

December 13, 2016