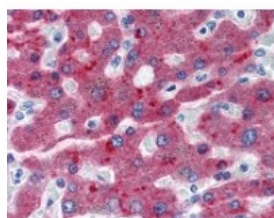




Factor H Antibody [OX-24]

CATALOG NUMBER: 48-034



Human liver tissue stained with Factor H Antibody at 20 ug/mL followed by biotinylated anti-mouse IgG secondary antibody, alkaline phosphatase-streptavidin and chromogen.

Specifications

SPECIES REACTIVITY:	Human
TESTED APPLICATIONS:	ELISA, FACS, IHC, IP, WB
APPLICATIONS:	Factor H antibody can be used in immunohistochemistry starting at 2.5 - 5 ug/mL.
USER NOTE:	Optimal dilutions for each application to be determined by the researcher.
SPECIFICITY:	Purified anti-human factor H (beta 1H) (139 kD) monoclonal antibody clone OX-24 inhibits the binding of factor H to surface bound C3. This antibody recognizes the human serum complement protein factor H and a 43-49kD truncated form of factor H present at.
IMMUNOGEN:	Human complement factor H
HOST SPECIES:	Mouse

Properties

PURIFICATION:	Protein G Column
PHYSICAL STATE:	Liquid
BUFFER:	PBS, 0.02% sodium azide.
STORAGE CONDITIONS:	Store Factor H antibody at 4 °C for short term applications. For long term storage, aliquot and -20 °C.
CLONALITY:	Monoclonal
ISOTYPE:	IgG1
CONJUGATE:	Unconjugated

Additional Info

ALTERNATE NAMES:	CFH, Adrenomedullin binding protein, AHUS1, AMBP1, ARMS1, ARMD4, Beta-1-H-globulin, Factor H, Factor H-like 1, HF, HF2, H factor 1, H factor 2 (complement), HUS, HF1, Beta-1H, CFHL3, Complement factor H, H factor 1 (complement)
ACCESSION NO.:	P08603
PROTEIN GI NO.:	158517847

OFFICIAL SYMBOL:	CFH
GENE ID:	3075

Background

FOR RESEARCH USE ONLY

December 13, 2016