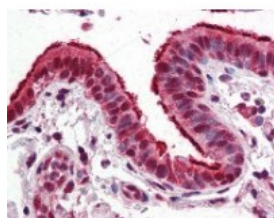




## FOXP1 Antibody [JC12]

CATALOG NUMBER: 48-028



Human lung, respiratory epithelium tissue stained with FOXP1 Antibody at 10 ug/mL followed by biotinylated anti-mouse IgG secondary antibody, alkaline phosphatase-streptavidin and chromogen.

### Specifications

<b>SPECIES REACTIVITY:</b>	Human, Mouse
<b>TESTED APPLICATIONS:</b>	IHC, WB
<b>APPLICATIONS:</b>	FOXP1 antibody can be used in ELISA, and immunohistochemistry starting at 10 ug/mL.
<b>USER NOTE:</b>	Optimal dilutions for each application to be determined by the researcher.
<b>HOST SPECIES:</b>	Mouse

### Properties

<b>PURIFICATION:</b>	Protein G Column
<b>PHYSICAL STATE:</b>	Liquid
<b>BUFFER:</b>	PBS, pH 7.4, 0.09% sodium azide.
<b>STORAGE CONDITIONS:</b>	Store FOXP1 antibody at 4 °C or -20 °C. As with all antibodies avoid freeze/thaw cycles. <b>Store undiluted.</b>
<b>CLONALITY:</b>	Monoclonal
<b>ISOTYPE:</b>	IgG2a
<b>CONJUGATE:</b>	Unconjugated

### Additional Info

<b>ALTERNATE NAMES:</b>	FOXP1, 12CC4, Glutamine-rich factor 1, HFKH1B, HSPC215, Forkhead box P1, Forkhead box protein P1, QRF1
<b>ACCESSION NO.:</b>	Q9H334
<b>PROTEIN GI NO.:</b>	14548062
<b>OFFICIAL SYMBOL:</b>	FOXP1
<b>GENE ID:</b>	27086

### Background

