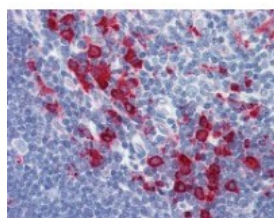




CD68 Antibody [KP1]

CATALOG NUMBER: 48-024



Human thymus tissue stained with CD68 Antibody at 1:50 followed by biotinylated anti-mouse IgG secondary antibody, alkaline phosphatase-streptavidin and chromogen.

Specifications

SPECIES REACTIVITY:	Cat, Human, Monkey, Rat
TESTED APPLICATIONS:	IHC
APPLICATIONS:	CD68 antibody can be used in ELISA, Western Blot, immunohistochemistry starting at 10 ug/mL, and immunoprecipitation
USER NOTE:	Optimal dilutions for each application to be determined by the researcher.
SPECIFICITY:	Recognizes the human glycoprotein of 110kD, which is identified as CD68. Species cross-reactivity: Monkey, feline, rat. Does not react with pig, canine, chicken.
IMMUNOGEN:	Subcellular fraction of human alveolar macrophages. Cellular Localization: Cytoplasmic.
HOST SPECIES:	Mouse

Properties

PURIFICATION:	Protein G Column
PHYSICAL STATE:	Liquid
BUFFER:	10 mM PBS, pH 7.4, 0.2% BSA, 0.09% sodium azide.
STORAGE CONDITIONS:	Store CD68 antibody at 4 °C or -20 °C. As with all antibodies avoid freeze/thaw cycles.
CLONALITY:	Monoclonal
ISOTYPE:	IgG1,k
CONJUGATE:	Unconjugated

Additional Info

ALTERNATE NAMES:	CD68, CD68 antigen, gp110, SCARD1, CD68 molecule, LAMP4, Macrophage antigen CD68, Macrosialin
ACCESSION NO.:	P34810
PROTEIN GI NO.:	147744552
OFFICIAL SYMBOL:	CD68

Background

FOR RESEARCH USE ONLY

December 13, 2016