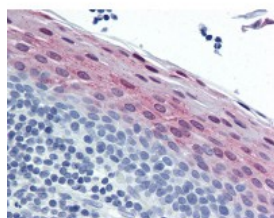




Stefin B Antibody [M2F1]

CATALOG NUMBER: 51-936



Immunohistochemistry of human tonsil tissue stained using Stefina B Monoclonal Antibody.

Specifications

SPECIES REACTIVITY:	Human
TESTED APPLICATIONS:	ELISA, IF, IHC, WB
APPLICATIONS:	Stefin B antibody can be used in Western Blot starting at 2 ug/mL, immunohistochemistry starting at 1:50, and immunofluorescence.
USER NOTE:	Optimal dilutions for each application to be determined by the researcher.
IMMUNOGEN:	CSTB (AAH03370.1, 1 a.a. ~ 98 a.a) full length recombinant protein with GST tag. MW of the GST tag alone is 26 KDa.
HOST SPECIES:	Mouse

Properties

PURIFICATION:	Protein A Column
PHYSICAL STATE:	Liquid
BUFFER:	PBS, pH 7.2
STORAGE CONDITIONS:	Aliquot and store Stefina B antibody at -20 °C or -80 °C. As with all antibodies avoid freeze/thaw cycles.
CLONALITY:	Monoclonal
ISOTYPE:	IgG1,k
CONJUGATE:	Unconjugated

Additional Info

ALTERNATE NAMES:	CSTB, CPI-B, EPM1, EPM1A, PME, Stefina B, Stefina-B, ULD, Cystatin b, Cystatin B (stefina B), Cystatin-B, STFB
ACCESSION NO.:	P04080
PROTEIN GI NO.:	1706278
OFFICIAL SYMBOL:	CSTB
GENE ID:	1476

Background

