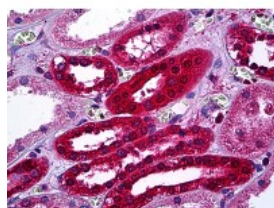




AKR1B1 Antibody [2D12]

CATALOG NUMBER: 51-934



Immunohistochemistry of human kidney
tubules stained using AKR1B1 Monoclonal
Antibody.

Specifications

SPECIES REACTIVITY:	Human
TESTED APPLICATIONS:	ELISA, IHC, WB
APPLICATIONS:	AKR1B1 antibody can be used in immunohistochemistry starting at 1:50, and flow cytometry.
USER NOTE:	Optimal dilutions for each application to be determined by the researcher.
IMMUNOGEN:	AKR1B1 (AAH00260, 1 a.a. ~ 316 a.a) full-length recombinant protein with GST tag. MW of the GST tag alone is 26 KDa.
HOST SPECIES:	Mouse

Properties

PURIFICATION:	Protein A Column
PHYSICAL STATE:	Liquid
BUFFER:	PBS, pH 7.2
STORAGE CONDITIONS:	AKR1B1 antibody can be stored short term 4 °C. For long term storage aliquot and store at -20 °C. As with all antibodies avoid freeze/thaw cycles.
CLONALITY:	Monoclonal
ISOTYPE:	IgG1,k
CONJUGATE:	Unconjugated

Additional Info

ALTERNATE NAMES:	AKR1B1, Aldose reductase, ALDR1, ADR, Aldehyde reductase, Aldehyde reductase 1, ALR2, Lii5-2 CTCL tumor antigen, Low Km aldose reductase
ACCESSION NO.:	P15121
PROTEIN GI NO.:	113596
OFFICIAL SYMBOL:	AKR1B1
GENE ID:	231

