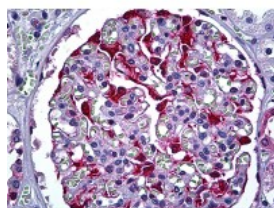




S100A6 Antibody [6B5]

CATALOG NUMBER: 51-797



Immunohistochemistry of human kidney,
Glomerulus stained using S100A6
Monoclonal Antibody.

Specifications

SPECIES REACTIVITY:	Human
TESTED APPLICATIONS:	ELISA, IF, IHC, WB
APPLICATIONS:	S100A6 antibody can be used in ELISA, Western Blot, immunohistochemistry starting at 10 ug/mL, immunocytochemistry, and immunoprecipitation.
USER NOTE:	Optimal dilutions for each application to be determined by the researcher.
IMMUNOGEN:	Recombinant protein
HOST SPECIES:	Mouse

Properties

PURIFICATION:	Protein A Column
PHYSICAL STATE:	Liquid
BUFFER:	PBS, pH 7.2
STORAGE CONDITIONS:	S100A6 antibody can be stored short term 4 °C. For long term storage aliquot and store at -20 °C. As with all antibodies avoid freeze/thaw cycles.
CLONALITY:	Monoclonal
ISOTYPE:	IgG1,k
CONJUGATE:	Unconjugated

Additional Info

ALTERNATE NAMES:	S100A6, 2A9, 5B10, CABP, CACY, PRA, MLN 4, Protein S100-A6, Calcyclin
ACCESSION NO.:	P06703
PROTEIN GI NO.:	116509
OFFICIAL SYMBOL:	S100A6
GENE ID:	6277

Background

