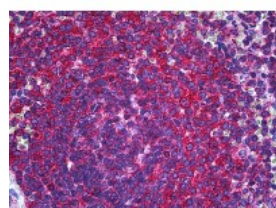




RALB Antibody [4D1]

CATALOG NUMBER: 51-792



Immunohistochemistry of human spleen tissue stained using RALB Monoclonal Antibody.

Specifications

SPECIES REACTIVITY:	Human
TESTED APPLICATIONS:	ELISA, IHC, IP, WB
APPLICATIONS:	RALB antibody can be used in Western Blot starting at 1 ug/mL, immunohistochemistry starting at 5 ug/mL, and immunocytochemistry starting at 2 ug/mL.
USER NOTE:	Optimal dilutions for each application to be determined by the researcher.
IMMUNOGEN:	Recombinant protein
HOST SPECIES:	Mouse

Properties

PURIFICATION:	Protein A Column
PHYSICAL STATE:	Liquid
BUFFER:	PBS, pH 7.2
STORAGE CONDITIONS:	RALB antibody can be stored short term 4 °C. For long term storage aliquot and store at -20 °C. As with all antibodies avoid freeze/thaw cycles.
CLONALITY:	Monoclonal
ISOTYPE:	IgG2a,k
CONJUGATE:	Unconjugated

Additional Info

ALTERNATE NAMES:	RALB, GTP binding protein), RAS-like protein B, Ras-related protein Ral-B
ACCESSION NO.:	P11234
PROTEIN GI NO.:	131835
OFFICIAL SYMBOL:	RALB
GENE ID:	5899

Background

