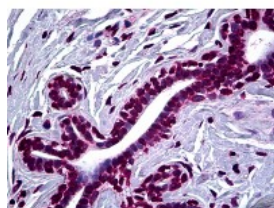




SMAD2 Antibody [3G6]

CATALOG NUMBER: 51-747



Immunohistochemistry of human breast tissue stained using SMAD2 Monoclonal Antibody.

Specifications

SPECIES REACTIVITY:	Human
TESTED APPLICATIONS:	ELISA, IHC, WB
APPLICATIONS:	SMAD2 antibody can be used in ELISA starting at 1 ug/mL, Western Blot starting at 1 ug/mL, and immunohistochemistry starting at 20 ug/mL.
USER NOTE:	Optimal dilutions for each application to be determined by the researcher.
IMMUNOGEN:	Recombinant protein
HOST SPECIES:	Mouse

Properties

PURIFICATION:	Protein A Column
PHYSICAL STATE:	Liquid
BUFFER:	PBS, pH 7.2
STORAGE CONDITIONS:	SMAD2 antibody can be stored short term 4 °C. For long term storage aliquot and store at -20 °C. As with all antibodies avoid freeze/thaw cycles.
CLONALITY:	Monoclonal
ISOTYPE:	IgG2b,k
CONJUGATE:	Unconjugated

Additional Info

ALTERNATE NAMES:	SMAD2, HMAD-2, HSMAD2, JV18-1, Mad protein homolog smad2, MADR2, MADH2, SMAD 2, MAD homolog 2, Mad-related protein 2, JV18, Mother against DPP homolog 2, Mothers against DPP homolog 2, Sma- and Mad-related protein 2, SMAD family member 2
ACCESSION NO.:	Q15796
PROTEIN GI NO.:	13633914
OFFICIAL SYMBOL:	SMAD2
GENE ID:	4087

