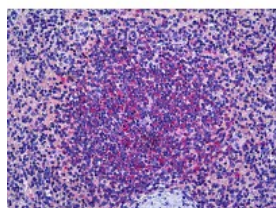




PRKD2 Antibody [2E4]

CATALOG NUMBER: 51-746



Immunohistochemistry of human spleen tissue stained using PRKD2 Monoclonal Antibody.

Specifications

SPECIES REACTIVITY:	Human
TESTED APPLICATIONS:	ELISA, IHC, WB
APPLICATIONS:	PRKD2 antibody can be used in ELISA starting at 1 ug/mL, Western Blot starting at 1 ug/mL, and immunohistochemistry starting at 5 ug/mL.
USER NOTE:	Optimal dilutions for each application to be determined by the researcher.
IMMUNOGEN:	Recombinant protein
HOST SPECIES:	Mouse

Properties

PURIFICATION:	Protein A Column
PHYSICAL STATE:	Liquid
BUFFER:	PBS, pH 7.2
STORAGE CONDITIONS:	PRKD2 antibody can be stored short term 4 °C. For long term storage aliquot and store at -20 °C. As with all antibodies avoid freeze/thaw cycles.
CLONALITY:	Monoclonal
ISOTYPE:	IgG2b,k
CONJUGATE:	Unconjugated

Additional Info

ALTERNATE NAMES:	PRKD2, HSPC187, NPKC-D2, Protein kinase D2, DKFZP586E0820
ACCESSION NO.:	Q9BZL6
PROTEIN GI NO.:	296434570
OFFICIAL SYMBOL:	PRKD2
GENE ID:	25865

Background

