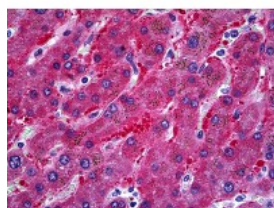




## ALDH1L1 Antibody [3E9]

CATALOG NUMBER: 51-742



Immunohistochemistry of human liver tissue stained using ALDH1L1 Monoclonal Antibody.

### Specifications

|                             |  |
|-----------------------------|--|
| <b>SPECIES REACTIVITY:</b>  | Human, Mouse   |
| <b>TESTED APPLICATIONS:</b> | ELISA, IF, IHC, WB   |
| <b>APPLICATIONS:</b>        | ALDH1L1 antibody can be used in Western Blot starting at 1 ug/mL, and immunohistochemistry starting at 20 ug/mL. |
| <b>USER NOTE:</b>           | Optimal dilutions for each application to be determined by the researcher.                                       |
| <b>IMMUNOGEN:</b>           | Recombinant protein  |
| <b>HOST SPECIES:</b>        | Mouse  |

### Properties

|                            |   |
|----------------------------|---|
| <b>PURIFICATION:</b>       | Protein A Column  |
| <b>PHYSICAL STATE:</b>     | Liquid  |
| <b>BUFFER:</b>             | PBS, pH 7.2   |
| <b>STORAGE CONDITIONS:</b> | ALDH1L1 antibody can be stored short term 4 °C. For long term storage aliquot and store at -20 °C. As with all antibodies avoid freeze/thaw cycles. |
| <b>CLONALITY:</b>          | Monoclonal  |
| <b>ISOTYPE:</b>            | IgG3,k  |
| <b>CONJUGATE:</b>          | Unconjugated  |

### Additional Info

|                         |   |
|-------------------------|---|
| <b>ALTERNATE NAMES:</b> | ALDH1L1, 10-fTHF, 10-FTHFDH, FTHFD, FDH |
| <b>ACCESSION NO.:</b>   | O75891                                  |
| <b>PROTEIN GI NO.:</b>  | 59802911                                |
| <b>OFFICIAL SYMBOL:</b> | ALDH1L1                                 |
| <b>GENE ID:</b>         | 10840                                   |

### Background

