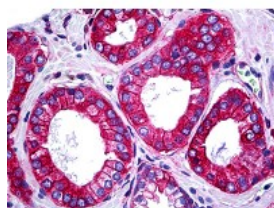




ACT1 Antibody [4A3]

CATALOG NUMBER: 51-741



Immunohistochemistry of human prostate tissue stained using ACT1 Monoclonal Antibody.

Specifications

SPECIES REACTIVITY:	Human
TESTED APPLICATIONS:	ELISA, IF, IHC, WB
APPLICATIONS:	ACT1 antibody can be used in Western Blot starting at 1 - 4 ug/mL, and immunohistochemistry starting at 10 ug/mL.
USER NOTE:	Optimal dilutions for each application to be determined by the researcher.
IMMUNOGEN:	Recombinant protein
HOST SPECIES:	Mouse

Properties

PURIFICATION:	Protein A Column
PHYSICAL STATE:	Liquid
BUFFER:	PBS, pH 7.2
STORAGE CONDITIONS:	ACT1 antibody can be stored short term 4 °C. For long term storage aliquot and store at -20 °C. As with all antibodies avoid freeze/thaw cycles.
CLONALITY:	Monoclonal
ISOTYPE:	IgG2a,k
CONJUGATE:	Unconjugated

Additional Info

ALTERNATE NAMES:	TRAF3IP2, C6orf2, C6orf4, C6orf5, CIKS, DKFZP586G0522, Connection to IKK and SAPK/JNK, ACT1, Adapter protein CIKS, NFkB-activating protein ACT1, PSORS13, TRAF3-interacting protein 2, C6orf6, TRAF3 interacting protein 2
ACCESSION NO.:	O43734
PROTEIN GI NO.:	317373453
OFFICIAL SYMBOL:	TRAF3IP2
GENE ID:	10758

