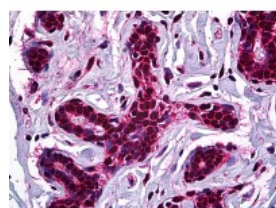




STAG1 Antibody [2E9]

CATALOG NUMBER: 51-738



Immunohistochemistry of human breast tissue stained using STAG1 Monoclonal Antibody.

Specifications

SPECIES REACTIVITY:	Human
TESTED APPLICATIONS:	ELISA, IF, IHC, WB
APPLICATIONS:	STAG1 antibody can be used in Western Blot starting at 4 - 6 ug/mL, immunohistochemistry starting at 10 ug/mL, and flow cytometry starting at 1 - 10 ug/mL.
USER NOTE:	Optimal dilutions for each application to be determined by the researcher.
IMMUNOGEN:	Recombinant protein
HOST SPECIES:	Mouse

Properties

PURIFICATION:	Protein A Column
PHYSICAL STATE:	Liquid
BUFFER:	PBS, pH 7.2
STORAGE CONDITIONS:	STAG1 antibody can be stored short term 4 °C. For long term storage aliquot and store at -20 °C. As with all antibodies avoid freeze/thaw cycles.
CLONALITY:	Monoclonal
ISOTYPE:	IgG2b,k
CONJUGATE:	Unconjugated

Additional Info

ALTERNATE NAMES:	STAG1, Cohesin subunit SA-1, SA-1, SCC3 homolog 1, SCC3A, Stromal antigen 1, SA1
ACCESSION NO.:	Q8WVM7
PROTEIN GI NO.:	209572720
OFFICIAL SYMBOL:	STAG1
GENE ID:	10274

Background

