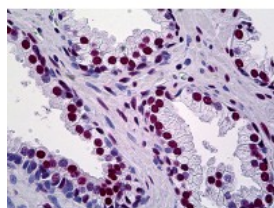




## TRIM28 Antibody [4E6]

CATALOG NUMBER: 51-735



Immunohistochemistry of human prostate tissue stained using TRIM28 Monoclonal Antibody.

### Specifications

<b>SPECIES REACTIVITY:</b>	Human, Mouse, Rat
<b>TESTED APPLICATIONS:</b>	ELISA, IF, IHC, WB
<b>APPLICATIONS:</b>	TRIM28 antibody can be used in Western Blot starting at 1 - 3 ug/mL, and immunohistochemistry starting at 10 ug/mL.
<b>USER NOTE:</b>	Optimal dilutions for each application to be determined by the researcher.
<b>IMMUNOGEN:</b>	Recombinant protein
<b>HOST SPECIES:</b>	Mouse

### Properties

<b>PURIFICATION:</b>	Protein A Column
<b>PHYSICAL STATE:</b>	Liquid
<b>BUFFER:</b>	PBS, pH 7.2
<b>STORAGE CONDITIONS:</b>	TRIM28 antibody can be stored short term 4 °C. For long term storage aliquot and store at -20 °C. As with all antibodies avoid freeze/thaw cycles.
<b>CLONALITY:</b>	Monoclonal
<b>ISOTYPE:</b>	IgG2b,k
<b>CONJUGATE:</b>	Unconjugated

### Additional Info

<b>ALTERNATE NAMES:</b>	TRIM28, E3 SUMO-protein ligase TRIM28, KRIP-1, Nuclear corepressor KAP-1, KAP-1, KAP1, KRAB-interacting protein 1, TIF1B, RNF96, TIF1-beta, TIF1beta, Tripartite motif-containing 28, KRAB-associated protein 1, RING finger protein 96, TF1B, Tif1beta zinc finger protein, Tripartite motif containing 28
<b>ACCESSION NO.:</b>	Q13263
<b>PROTEIN GI NO.:</b>	3183179
<b>OFFICIAL SYMBOL:</b>	TRIM28
<b>GENE ID:</b>	10155

