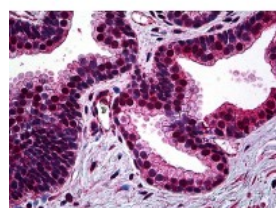




SMC1 Antibody [1B9]

CATALOG NUMBER: 51-728



Immunohistochemistry of human prostate tissue stained using SMC1 Monoclonal Antibody.

Specifications

SPECIES REACTIVITY:	Human
TESTED APPLICATIONS:	ELISA, IHC, WB
APPLICATIONS:	SMC1 antibody can be used in Western Blot starting at 0.5 - 2 ug/mL, and immunohistochemistry starting at 10 ug/mL.
USER NOTE:	Optimal dilutions for each application to be determined by the researcher.
IMMUNOGEN:	Recombinant protein
HOST SPECIES:	Mouse

Properties

PURIFICATION:	Protein A Column
PHYSICAL STATE:	Liquid
BUFFER:	PBS, pH 7.2
STORAGE CONDITIONS:	SMC1 antibody can be stored short term 4 °C. For long term storage aliquot and store at -20 °C. As with all antibodies avoid freeze/thaw cycles.
CLONALITY:	Monoclonal
ISOTYPE:	IgG1,k
CONJUGATE:	Unconjugated

Additional Info

ALTERNATE NAMES:	SMC1A, CDLS2, DXS423E, KIAA0178, SB1.8, SMC protein 1A, SMC1, SMC1L1, SMC-1-alpha, SMC-1A, SMCB
ACCESSION NO.:	Q14683
PROTEIN GI NO.:	29336622
OFFICIAL SYMBOL:	SMC1A
GENE ID:	8243

