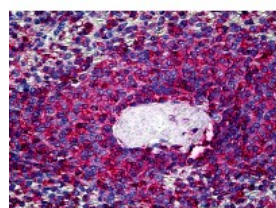




CD45 Antibody [PD7/26/16 + 2B11]

CATALOG NUMBER: 51-643



Immunohistochemistry of human spleen tissue stained using CD45 Monoclonal Antibody.

Specifications

SPECIES REACTIVITY:	Human
TESTED APPLICATIONS:	FACS, IF, IHC
APPLICATIONS:	CD45 antibody can be used in ELISA, Western Blot starting at 1 ug/mL, and immunohistochemistry starting at 10 ug/mL.
USER NOTE:	Optimal dilutions for each application to be determined by the researcher.
IMMUNOGEN:	PD7/26/16: human peripheral blood lymphocytes maintained in T cell growth factor. 2B11: isolated neoplastic cells from T cell lymphoma.
HOST SPECIES:	Mouse

Properties

PURIFICATION:	Protein G Column
PHYSICAL STATE:	Liquid
BUFFER:	10mM PBS, pH 7.4, with 0.2% BSA and 0.09% Sodium Azide
STORAGE CONDITIONS:	CD45 antibody is stable for 24 months when stored at 2-8 °C.
CLONALITY:	Monoclonal
ISOTYPE:	IgG1,k
CONJUGATE:	Unconjugated

Additional Info

ALTERNATE NAMES:	PTPRC, B220, CD45R, CD45, gp180, Leukocyte common antigen, L-CA, Leucocyte common antigen, LY5, T200, T200 glycoprotein, T200 leukocyte common antigen, CD45 antigen, LCA
ACCESSION NO.:	P08575
PROTEIN GI NO.:	33112650
OFFICIAL SYMBOL:	PTPRC
GENE ID:	5788

FOR RESEARCH USE ONLY

December 13, 2016