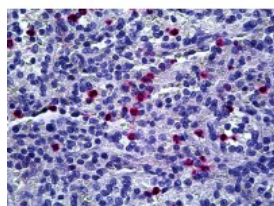




Macrophage Antibody [MAC387]

CATALOG NUMBER: 51-640



Immunohistochemistry of human spleen,
Neutrophils stained using Macrophage
Monoclonal Antibody.

Specifications

SPECIES REACTIVITY:	Baboon, Cat, Dog, Guinea Pig, Human, Monkey, Mouse, Pig, Rat
TESTED APPLICATIONS:	IHC
APPLICATIONS:	Macrophage antibody can be used in ELISA, Western Blot starting at 1:500 - 1:1000, and immunohistochemistry starting at 5 ug/mL.
USER NOTE:	Optimal dilutions for each application to be determined by the researcher.
IMMUNOGEN:	Affinity purified monocyte membrane preparation
HOST SPECIES:	Mouse

Properties

PURIFICATION:	Protein G Column
PHYSICAL STATE:	Liquid
BUFFER:	10mM PBS, pH 7.4, with 0.2% BSA and 0.09% Sodium Azide
STORAGE CONDITIONS:	Macrophage antibody is stable for 24 months when stored at 2-8 °C.
CLONALITY:	Monoclonal
ISOTYPE:	IgG1
CONJUGATE:	Unconjugated

Additional Info

ALTERNATE NAMES:	CAGA, CFAG, MRP8, Protein S100-A8, Calgranulin-A, P8, MIF, NIF, CGLA, L1Ag, CP-10, MA387, 60B8AG
ACCESSION NO.:	P05109
PROTEIN GI NO.:	115442
OFFICIAL SYMBOL:	S100A8
GENE ID:	6279

Background

