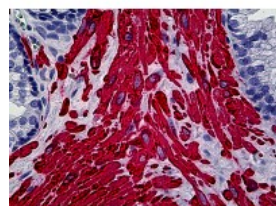




Actin Muscle Antibody [MSA06]

CATALOG NUMBER: 51-637



Immunohistochemistry of human prostate tissue stained using Actin Muscle Monoclonal Antibody.

Specifications

SPECIES REACTIVITY:	Bovine, Dog, Horse, Human, Mouse, Pig, Rat
TESTED APPLICATIONS:	IF, IHC
APPLICATIONS:	Actin Muscle antibody can be used in ELISA, Western Blot starting at 1:1000 - 1:2000, and immunohistochemistry starting at 10 ug/mL.
USER NOTE:	Optimal dilutions for each application to be determined by the researcher.
IMMUNOGEN:	Purified actin
HOST SPECIES:	Mouse

Properties

PURIFICATION:	Protein G Column
PHYSICAL STATE:	Liquid
BUFFER:	10mM PBS, pH 7.4, with 0.2% BSA and 0.09% Sodium Azide
STORAGE CONDITIONS:	Actin Muscle antibody is stable for 24 months when stored at 2-8 °C.
CLONALITY:	Monoclonal
ISOTYPE:	IgG1,k
CONJUGATE:	Unconjugated

Additional Info

ALTERNATE NAMES:	ACTC, Actin, alpha cardiac muscle 1, Alpha-cardiac actinACTC, ASD5, CMD1R, CMH11, LVNC4
ACCESSION NO.:	P68032
PROTEIN GI NO.:	54036697
OFFICIAL SYMBOL:	ACTC1
GENE ID:	70

Background

