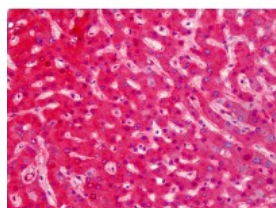




## C Reactive Protein Antibody, Monoclonal

CATALOG NUMBER: 51-629



Immunohistochemistry of human liver tissue stained using C Reactive Protein Monoclonal Antibody.

### Specifications

<b>SPECIES REACTIVITY:</b>	Human
<b>TESTED APPLICATIONS:</b>	ELISA, IHC, WB
<b>APPLICATIONS:</b>	C Reactive Protein antibody can be used in Western Blot, and immunohistochemistry starting at 1:50.
<b>USER NOTE:</b>	Optimal dilutions for each application to be determined by the researcher.
<b>SPECIFICITY:</b>	Recognizes the human CRP antigen both in the presence and in the absence (samples containing EDTA) of Ca <sup>2+</sup> .
<b>IMMUNOGEN:</b>	Human CRP, derived with pleural/ascetic fluid or plasma.
<b>HOST SPECIES:</b>	Mouse

### Properties

<b>PURIFICATION:</b>	Protein A Column
<b>PHYSICAL STATE:</b>	Liquid
<b>BUFFER:</b>	PBS, pH 7.4, 0.1% sodium azide
<b>STORAGE CONDITIONS:</b>	C Reactive Protein antibody can be stored short term 4 °C. For long term storage aliquot and store at -20 °C. As with all antibodies avoid freeze/thaw cycles.
<b>CLONALITY:</b>	Monoclonal
<b>ISOTYPE:</b>	IgG1
<b>CONJUGATE:</b>	Unconjugated

### Additional Info

<b>ALTERNATE NAMES:</b>	CRP, C-reactive protein, Pentraxin 1, PTX1
<b>ACCESSION NO.:</b>	P02741
<b>PROTEIN GI NO.:</b>	117486
<b>OFFICIAL SYMBOL:</b>	CRP
<b>GENE ID:</b>	1401

