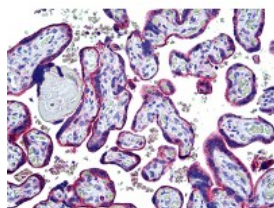




## LAMP2 Antibody, Monoclonal

CATALOG NUMBER: 51-617



Immunohistochemistry of human placenta tissue stained using LAMP2 Monoclonal Antibody.

### Specifications

<b>SPECIES REACTIVITY:</b>	Human
<b>TESTED APPLICATIONS:</b>	FACS, IHC
<b>APPLICATIONS:</b>	LAMP2 antibody can be used in ELISA, Western Blot starting at 1 ug/mL, and immunohistochemistry starting at 10 ug/mL.
<b>USER NOTE:</b>	This product ships on dry ice.
<b>HOST SPECIES:</b>	Mouse

### Properties

<b>PURIFICATION:</b>	Purified
<b>PHYSICAL STATE:</b>	Liquid
<b>BUFFER:</b>	100 mM borate buffered saline, pH 8.0. No preservatives or amine-containing buffer salts added.
<b>STORAGE CONDITIONS:</b>	LAMP2 antibody should be stored at -20 °C. As with all antibodies avoid freeze/thaw cycles.
<b>CLONALITY:</b>	Monoclonal
<b>ISOTYPE:</b>	IgG1
<b>CONJUGATE:</b>	Unconjugated

### Additional Info

<b>ALTERNATE NAMES:</b>	LAMP2, CD107b, CD107b antigen, LAMPB, LGP110, LAMP-2
<b>ACCESSION NO.:</b>	P13473
<b>PROTEIN GI NO.:</b>	1708854
<b>OFFICIAL SYMBOL:</b>	LAMP2
<b>GENE ID:</b>	3920

### Background

FOR RESEARCH USE ONLY

