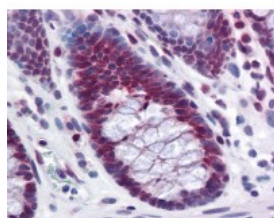




RPL39L Antibody [4A8-1B6]

CATALOG NUMBER: 51-602



Immunohistochemistry of human colon tissue stained using RPL39L Monoclonal Antibody.

Specifications

SPECIES REACTIVITY:	Human
TESTED APPLICATIONS:	ELISA, IHC, WB
APPLICATIONS:	RPL39L antibody can be used in Western Blot, and immunohistochemistry starting at 15 ug/mL.
USER NOTE:	Optimal dilutions for each application to be determined by the researcher.
IMMUNOGEN:	RPL39L (AAH12328, 1 a.a. ~ 52 a.a) full length recombinant protein with GST tag. MW of the GST tag alone is 26 KDa.
HOST SPECIES:	Mouse

Properties

PURIFICATION:	Protein A Column
PHYSICAL STATE:	Liquid
BUFFER:	PBS, pH 7.2
STORAGE CONDITIONS:	Store RPL39L antibody at -20 °C. Aliquot to avoid freeze/thaw cycles.
CLONALITY:	Monoclonal
ISOTYPE:	IgG1,k
CONJUGATE:	Unconjugated

Additional Info

ALTERNATE NAMES:	RPL39L, 60S ribosomal protein L39-like, 60S ribosomal protein L39-2, L39-2, Ribosomal protein L39-like 1, Ribosomal protein L39-like, RPL39L1
ACCESSION NO.:	Q96EH5
PROTEIN GI NO.:	29427944
OFFICIAL SYMBOL:	RPL39L
GENE ID:	116832

Background

