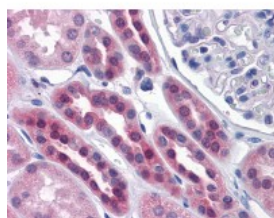




## SDSL Antibody [M2]

CATALOG NUMBER: 51-601



Immunohistochemistry of human kidney tissue stained using SDSL Monoclonal Antibody.

### Specifications

<b>APPLICATIONS:</b>	SDSL antibody can be used in immunohistochemistry starting at 1:50, and immunofluorescence.
<b>USER NOTE:</b>	Optimal dilutions for each application to be determined by the researcher.
<b>IMMUNOGEN:</b>	SDSL (AAH09849, 1 a.a. ~ 330 a.a) full length recombinant protein with GST tag. MW of the GST tag alone is 26 KDa.
<b>HOST SPECIES:</b>	Mouse

### Properties

<b>PURIFICATION:</b>	Protein A Column
<b>PHYSICAL STATE:</b>	Liquid
<b>BUFFER:</b>	PBS, pH 7.2
<b>STORAGE CONDITIONS:</b>	Store SDSL antibody at -20 °C. Aliquot to avoid freeze/thaw cycles.
<b>CLONALITY:</b>	Monoclonal
<b>ISOTYPE:</b>	IgG <sub>k</sub>
<b>CONJUGATE:</b>	Unconjugated

### Additional Info

<b>ALTERNATE NAMES:</b>	SDSL, Serine dehydratase 2, Serine dehydratase-like, SDH, TDH, L-serine deaminase, L-threonine dehydratase, SDH 2, SDS-RS1
<b>ACCESSION NO.:</b>	Q96GA7
<b>PROTEIN GI NO.:</b>	74731799
<b>OFFICIAL SYMBOL:</b>	SDSL
<b>GENE ID:</b>	113675

### Background

FOR RESEARCH USE ONLY

