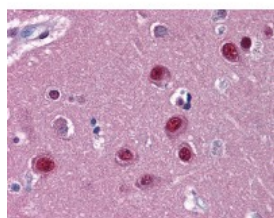




## NR1D1 Antibody [4F6]

CATALOG NUMBER: 51-545



Immunohistochemistry of human brain  
cortex tissue stained using NR1D1  
Monoclonal Antibody.

### Specifications

<b>SPECIES REACTIVITY:</b>	Human, Mouse
<b>TESTED APPLICATIONS:</b>	ELISA, IF, IHC, RNAi, WB
<b>APPLICATIONS:</b>	NR1D1 antibody can be used in Western Blot, immunohistochemistry starting at 10 ug/mL, and immunocytochemistry.
<b>USER NOTE:</b>	Optimal dilutions for each application to be determined by the researcher.
<b>IMMUNOGEN:</b>	NR1D1 (AAH56148, 1 a.a. ~ 615 a.a) full length recombinant protein with GST tag. MW of the GST tag alone is 26 KDa.
<b>HOST SPECIES:</b>	Mouse

### Properties

<b>PURIFICATION:</b>	Protein A Column
<b>PHYSICAL STATE:</b>	Liquid
<b>BUFFER:</b>	PBS, pH 7.2
<b>CONCENTRATION:</b>	0.5 mg/ml
<b>STORAGE CONDITIONS:</b>	Store NR1D1 antibody at 4 °C or -20 °C. As with all antibodies avoid freeze/thaw cycles.
<b>CLONALITY:</b>	Monoclonal
<b>ISOTYPE:</b>	IgG1,k
<b>CONJUGATE:</b>	Unconjugated

### Additional Info

<b>ALTERNATE NAMES:</b>	NR1D1, EAR1, Rev-erbA-alpha, Reverba, Reverbaalpha, Rev-erb alpha, Rev-erba, Rev-erbalph, RevErbAlpha, THRA1, Rev-ErbAalpha, Ear-1, HRev, THRAL, V-erbA-related protein 1
<b>ACCESSION NO.:</b>	P20393
<b>PROTEIN GI NO.:</b>	119100
<b>OFFICIAL SYMBOL:</b>	NR1D1
<b>GENE ID:</b>	9572

