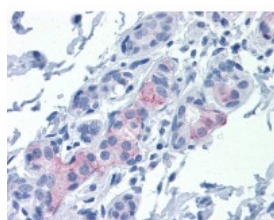




## Claudin 1 Antibody [1C5-D9]

CATALOG NUMBER: 51-539



Immunohistochemistry of human breast tissue stained using Claudin 1 Monoclonal Antibody.

### Specifications

<b>SPECIES REACTIVITY:</b>	Human
<b>TESTED APPLICATIONS:</b>	ELISA, IHC, WB
<b>APPLICATIONS:</b>	Claudin 1 antibody can be used in ELISA starting at 1: 10000, immunohistochemistry starting at 1: 100 - 1: 200, and immunohistochemistry in frozen tissues starting at 1: 200 - 1: 400.
<b>USER NOTE:</b>	Optimal dilutions for each application to be determined by the researcher.
<b>IMMUNOGEN:</b>	CLDN1 (AAH12471, 1 a.a. ~ 212 a.a) full length recombinant protein with GST tag. MW of the GST tag alone is 26 KDa.
<b>HOST SPECIES:</b>	Mouse

### Properties

<b>PURIFICATION:</b>	Protein A Column
<b>PHYSICAL STATE:</b>	Liquid
<b>BUFFER:</b>	PBS, pH 7.2
<b>STORAGE CONDITIONS:</b>	Store Claudin 1 antibody at -20 °C. Aliquot to avoid freeze/thaw cycles.
<b>CLONALITY:</b>	Monoclonal
<b>ISOTYPE:</b>	IgG2a,k
<b>CONJUGATE:</b>	Unconjugated

### Additional Info

<b>ALTERNATE NAMES:</b>	CLDN1, Claudin-1, Claudin 1, ILVASC, SEMP1, CLD1
<b>ACCESSION NO.:</b>	O95832
<b>PROTEIN GI NO.:</b>	6685283
<b>OFFICIAL SYMBOL:</b>	CLDN1
<b>GENE ID:</b>	9076

### Background

