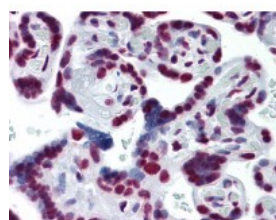




CDKL1 Antibody [2H6]

CATALOG NUMBER: 51-533



Immunohistochemistry of human placenta tissue stained using CDKL1 Monoclonal Antibody.

Specifications

SPECIES REACTIVITY:	Human
TESTED APPLICATIONS:	ELISA, IHC, WB
APPLICATIONS:	CDKL1 antibody can be used in ELISA starting at 1: 10000, Western Blot starting at 1: 500 - 1: 1000, and immunohistochemistry starting at 1: 1000 - 1: 2000.
USER NOTE:	Optimal dilutions for each application to be determined by the researcher.
IMMUNOGEN:	CDKL1 (NP_004187, 259 a.a. ~ 358 a.a) partial recombinant protein with GST tag. MW of the GST tag alone is 26 KDa.
HOST SPECIES:	Mouse

Properties

PURIFICATION:	Protein A Column
PHYSICAL STATE:	Liquid
BUFFER:	PBS, pH 7.2
STORAGE CONDITIONS:	Store CDKL1 antibody at -20 °C. Aliquot to avoid freeze/thaw cycles.
CLONALITY:	Monoclonal
ISOTYPE:	IgG2a,k
CONJUGATE:	Unconjugated

Additional Info

ALTERNATE NAMES:	CDKL1, CDC2-related kinase 1, KKIALRE, p42, Protein kinase p42 KKIALRE, Cyclin-dependent kinase-like 1
ACCESSION NO.:	Q00532
PROTEIN GI NO.:	229463050
OFFICIAL SYMBOL:	CDKL1
GENE ID:	8814

Background

