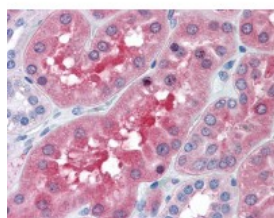




BBOX1 Antibody [6H3]

CATALOG NUMBER: 51-528



Immunohistochemistry of human kidney tissue stained using BBOX1 Monoclonal Antibody.

Specifications

SPECIES REACTIVITY:	Human
TESTED APPLICATIONS:	ELISA, IHC, WB
APPLICATIONS:	BBOX1 antibody can be used in Western Blot, and immunohistochemistry starting at 10 ug/mL.
USER NOTE:	Optimal dilutions for each application to be determined by the researcher.
IMMUNOGEN:	BBOX1 (NP_003977, 278 a.a. ~ 388 a.a) partial recombinant protein with GST tag. MW of the GST tag alone is 26 KDa.
HOST SPECIES:	Mouse

Properties

PURIFICATION:	Protein A Column
PHYSICAL STATE:	Liquid
BUFFER:	PBS, pH 7.2
STORAGE CONDITIONS:	Store BBOX1 antibody at -20 °C. Aliquot to avoid freeze/thaw cycles.
CLONALITY:	Monoclonal
ISOTYPE:	IgG1,k
CONJUGATE:	Unconjugated

Additional Info

ALTERNATE NAMES:	BBOX1, BBH, G-BBH, Gamma-BBH, BBOX
ACCESSION NO.:	O75936
PROTEIN GI NO.:	5915798
OFFICIAL SYMBOL:	BBOX1
GENE ID:	8424

Background

