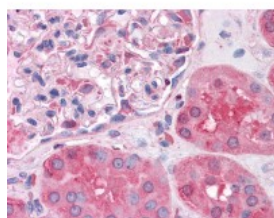




SHMT1 Antibody [4F9]

CATALOG NUMBER: 51-511



Immunohistochemistry of human kidney tissue stained using SHMT1 Monoclonal Antibody.

Specifications

SPECIES REACTIVITY:	Human
TESTED APPLICATIONS:	ELISA, IHC, WB
APPLICATIONS:	SHMT1 antibody can be used in Western Blot, and immunohistochemistry starting at 10 ug/mL.
USER NOTE:	Optimal dilutions for each application to be determined by the researcher.
IMMUNOGEN:	SHMT1 (NP_004160, 374 a.a. ~ 483 a.a) partial recombinant protein with GST tag. MW of the GST tag alone is 26 KDa.
HOST SPECIES:	Mouse

Properties

PURIFICATION:	Protein A Column
PHYSICAL STATE:	Liquid
BUFFER:	PBS, pH 7.2
STORAGE CONDITIONS:	Store SHMT1 antibody at -20 °C. Aliquot to avoid freeze/thaw cycles.
CLONALITY:	Monoclonal
ISOTYPE:	IgG1,k
CONJUGATE:	Unconjugated

Additional Info

ALTERNATE NAMES:	SHMT1, 14 kDa protein, CSHMT, Serine methylase, SHMT
ACCESSION NO.:	P34896
PROTEIN GI NO.:	462184
OFFICIAL SYMBOL:	SHMT1
GENE ID:	6470

Background

