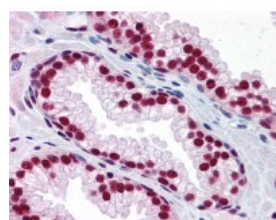




SAFB Antibody [5A11]

CATALOG NUMBER: 51-508



Immunohistochemistry of human prostate tissue stained using SAFB Monoclonal Antibody.

Specifications

SPECIES REACTIVITY:	Human
TESTED APPLICATIONS:	ELISA, IF, IHC, WB
APPLICATIONS:	SAFB antibody can be used in Western Blot, and immunohistochemistry starting at 10 ug/mL.
USER NOTE:	Optimal dilutions for each application to be determined by the researcher.
IMMUNOGEN:	SAFB (NP_002958, 111 a.a. ~ 201 a.a) partial recombinant protein with GST tag. MW of the GST tag alone is 26 KDa.
HOST SPECIES:	Mouse

Properties

PURIFICATION:	Protein A Column
PHYSICAL STATE:	Liquid
BUFFER:	PBS, pH 7.2
STORAGE CONDITIONS:	Store SAFB antibody at -20 °C. Aliquot to avoid freeze/thaw cycles.
CLONALITY:	Monoclonal
ISOTYPE:	IgG2b,k
CONJUGATE:	Unconjugated

Additional Info

ALTERNATE NAMES:	SAFB, HAP, HET, Scaffold attachment factor B, SAB-B1, SAFB1, SAF-B, SAF-B1, Scaffold attachment factor B1, Hsp27 ERE-TATA binding protein, HSP27 ERE-TATA-binding protein
ACCESSION NO.:	Q15424
PROTEIN GI NO.:	116242782
OFFICIAL SYMBOL:	SAFB
GENE ID:	6294

Background

