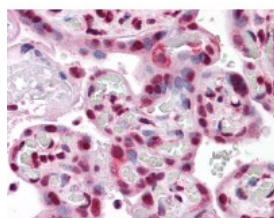




PPP1R2 Antibody [2E9]

CATALOG NUMBER: 51-498



Immunohistochemistry of human placenta tissue stained using PPP1R2 Monoclonal Antibody.

Specifications

SPECIES REACTIVITY:	Human
TESTED APPLICATIONS:	ELISA, IHC, WB
APPLICATIONS:	PPP1R2 antibody can be used in Western Blot starting at 1:500 - 1:1000, and immunohistochemistry starting at 10 ug/mL.
USER NOTE:	Optimal dilutions for each application to be determined by the researcher.
IMMUNOGEN:	PPP1R2 (NP_006232, 1 a.a. ~ 101 a.a) partial recombinant protein with GST tag. MW of the GST tag alone is 26 KDa.
HOST SPECIES:	Mouse

Properties

PURIFICATION:	Protein A Column
PHYSICAL STATE:	Liquid
BUFFER:	PBS, pH 7.2
STORAGE CONDITIONS:	Store PPP1R2 antibody at -20 °C. Aliquot to avoid freeze/thaw cycles.
CLONALITY:	Monoclonal
ISOTYPE:	IgG2a,k
CONJUGATE:	Unconjugated

Additional Info

ALTERNATE NAMES:	PPP1R2, IPP-2, Phosphoprotein phosphatase, IPP2, Phosphatase inhibitor 2
ACCESSION NO.:	P41236
PROTEIN GI NO.:	729856
OFFICIAL SYMBOL:	PPP1R2
GENE ID:	5504

Background

