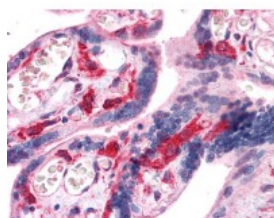




## HCLS1 Antibody [2A8]

CATALOG NUMBER: 51-464



Immunohistochemistry of human placenta tissue stained using HCLS1 Monoclonal Antibody.

### Specifications

<b>SPECIES REACTIVITY:</b>	Human
<b>TESTED APPLICATIONS:</b>	ELISA, IHC, WB
<b>APPLICATIONS:</b>	HCLS1 antibody can be used in ELISA starting at 1:000 - 1:1000, and immunohistochemistry starting at 5 - 10 ug/mL.
<b>USER NOTE:</b>	Optimal dilutions for each application to be determined by the researcher.
<b>IMMUNOGEN:</b>	HCLS1 (AAH16758, 266 a.a. ~ 356 a.a) partial recombinant protein with GST tag. MW of the GST tag alone is 26 KDa.
<b>HOST SPECIES:</b>	Mouse

### Properties

<b>PURIFICATION:</b>	Protein A Column
<b>PHYSICAL STATE:</b>	Liquid
<b>BUFFER:</b>	PBS, pH 7.2
<b>STORAGE CONDITIONS:</b>	Store HCLS1 antibody at -20 °C. Aliquot to avoid freeze/thaw cycles.
<b>CLONALITY:</b>	Monoclonal
<b>ISOTYPE:</b>	IgG1,k
<b>CONJUGATE:</b>	Unconjugated

### Additional Info

<b>ALTERNATE NAMES:</b>	HCLS1, CTTNL, LckBP1, p75, HS1
<b>ACCESSION NO.:</b>	P14317
<b>PROTEIN GI NO.:</b>	317373440
<b>OFFICIAL SYMBOL:</b>	HCLS1
<b>GENE ID:</b>	3059

### Background

