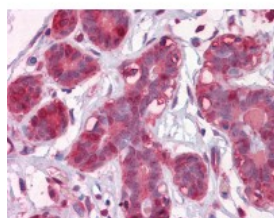




ENO1 Antibody [8G8]

CATALOG NUMBER: 51-455



Immunohistochemistry of human breast tissue stained using ENO1 Monoclonal Antibody.

Specifications

SPECIES REACTIVITY:	Human
TESTED APPLICATIONS:	ELISA, IF, IHC, WB
APPLICATIONS:	ENO1 antibody can be used in immunohistochemistry starting at 1/10 - 1/40, and immunohistochemistry in frozen tissues starting at 1/10 - 1/40.
USER NOTE:	Optimal dilutions for each application to be determined by the researcher.
IMMUNOGEN:	ENO1 (AAH22545, 1 a.a. ~ 435 a.a) full length recombinant protein with GST tag. MW of the GST tag alone is 26 KDa.
HOST SPECIES:	Mouse

Properties

PURIFICATION:	Protein A Column
PHYSICAL STATE:	Liquid
BUFFER:	PBS, pH 7.2
STORAGE CONDITIONS:	Store ENO1 antibody at -20 °C. Aliquot to avoid freeze/thaw cycles.
CLONALITY:	Monoclonal
ISOTYPE:	IgG1,k
CONJUGATE:	Unconjugated

Additional Info

ALTERNATE NAMES:	ENO1, Alpha Enolase, Alpha enolase like 1, ENO1L1, Enolase 1, MBP-1, MBPB1, MPB1, MYC promoter-binding protein 1, NNE, Phosphopyruvate hydratase, Alpha-enolase, Tau-crystallin, MBP1, MPB-1, C-myc promoter-binding protein, Enolase 1, (alpha), Enolase-alpha, Non-neural enolase, Plasminogen-binding protein, PPH
ACCESSION NO.:	P06733
PROTEIN GI NO.:	119339
OFFICIAL SYMBOL:	ENO1

Background

FOR RESEARCH USE ONLY

December 13, 2016