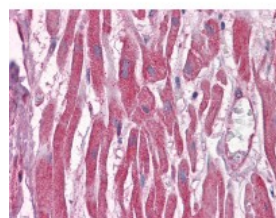




## DUSP6 Antibody [3G2]

CATALOG NUMBER: 51-451



Immunohistochemistry of human heart tissue stained using DUSP6 Monoclonal Antibody.

### Specifications

<b>SPECIES REACTIVITY:</b>	Human
<b>TESTED APPLICATIONS:</b>	ELISA, IF, IHC, RNAi, WB
<b>APPLICATIONS:</b>	DUSP6 antibody can be used in Western Blot, and immunohistochemistry starting at 5 ug/mL.
<b>USER NOTE:</b>	Optimal dilutions for each application to be determined by the researcher.
<b>IMMUNOGEN:</b>	DUSP6 (AAH03143, 1 a.a. ~ 382 a.a) full length recombinant protein with GST tag. MW of the GST tag alone is 26 KDa.
<b>HOST SPECIES:</b>	Mouse

### Properties

<b>PURIFICATION:</b>	Protein A Column
<b>PHYSICAL STATE:</b>	Liquid
<b>BUFFER:</b>	PBS, pH 7.2
<b>STORAGE CONDITIONS:</b>	Store DUSP6 antibody at -20 °C. Aliquot to avoid freeze/thaw cycles.
<b>CLONALITY:</b>	Monoclonal
<b>ISOTYPE:</b>	IgG1,k
<b>CONJUGATE:</b>	Unconjugated

### Additional Info

<b>ALTERNATE NAMES:</b>	DUSP6, Dual specificity phosphatase 6, MAP kinase phosphatase 3, MKP3, PYST1, RVH6, Mapk phosphatase 3, MKP-3, Phosphatase VH6
<b>ACCESSION NO.:</b>	Q16828
<b>PROTEIN GI NO.:</b>	108860971
<b>OFFICIAL SYMBOL:</b>	DUSP6
<b>GENE ID:</b>	1848

### Background

