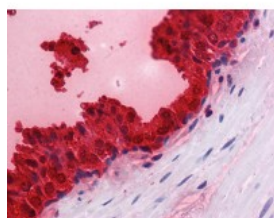




PSA Antibody, Monoclonal

CATALOG NUMBER: 51-415



Immunohistochemistry of human prostate tissue stained using PSA Monoclonal Antibody.

Specifications

SPECIES REACTIVITY:	Human
TESTED APPLICATIONS:	ELISA, IHC, WB
APPLICATIONS:	PSA antibody can be used in Western Blot, and immunohistochemistry starting at 10 ug/mL.
USER NOTE:	Optimal dilutions for each application to be determined by the researcher.
SPECIFICITY:	Recognizes prostate specific antigen (PSA), a serine protease produced by prostatic epithelial cells, which is also known as kallikrein 3. Serum PSA levels have been correlated with the stage of prostatic cancer, and have been used to monitor residua ...
IMMUNOGEN:	Human PSA isolated from pooled human seminal fluid
HOST SPECIES:	Mouse

Properties

PURIFICATION:	Protein G Column
PHYSICAL STATE:	Liquid
BUFFER:	PBS, pH 7.2, 0.09% sodium azide.
STORAGE CONDITIONS:	Store PSA antibody at 4 °C or -20 °C. As with all antibodies avoid freeze/thaw cycles.
CLONALITY:	Monoclonal
ISOTYPE:	IgG1
CONJUGATE:	Unconjugated

Additional Info

ALTERNATE NAMES:	KLK3, APS, Gamma-seminoprotein, Kallikrein-3, Kallikrein-related peptidase 3, P-30 antigen, Prostate specific antigen, Prostate-specific antigen, PSA, Semenogelase, KLK2A1, Semin
ACCESSION NO.:	P07288
PROTEIN GI NO.:	130989
OFFICIAL SYMBOL:	KLK3
GENE ID:	354

