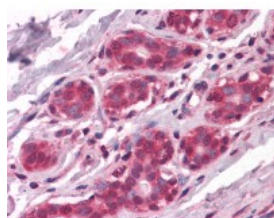




## NME1 Antibody [4B2]

CATALOG NUMBER: 51-411



Immunohistochemistry of human breast tissue stained using NME1 Monoclonal Antibody.

### Specifications

<b>SPECIES REACTIVITY:</b>	Human
<b>TESTED APPLICATIONS:</b>	ELISA, IF, IHC, WB
<b>APPLICATIONS:</b>	NME1 antibody can be used in immunohistochemistry starting at 5 ug/mL.
<b>USER NOTE:</b>	Optimal dilutions for each application to be determined by the researcher.
<b>IMMUNOGEN:</b>	Recombinant protein
<b>HOST SPECIES:</b>	Mouse

### Properties

<b>PURIFICATION:</b>	Ascites
<b>PHYSICAL STATE:</b>	Liquid
<b>BUFFER:</b>	0.03% sodium azide
<b>STORAGE CONDITIONS:</b>	NME1 antibody should be stored long term (months) at -20 °C and short term (weeks) at 4 °C. As with all antibodies avoid freeze/thaw cycles.
<b>CLONALITY:</b>	Monoclonal
<b>ISOTYPE:</b>	IgG1
<b>CONJUGATE:</b>	Unconjugated

### Additional Info

<b>ALTERNATE NAMES:</b>	NME1, AWD, NDKA, NB, NDK A, NM23-H1, NDP kinase A, NDPK-A, NDPKA, GAAD, Granzyme A-activated DNase, NBS, NM23
<b>ACCESSION NO.:</b>	P15531
<b>PROTEIN GI NO.:</b>	127981
<b>OFFICIAL SYMBOL:</b>	NME1
<b>GENE ID:</b>	4830

### Background

