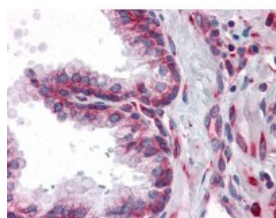




LYRIC Antibody [2F11C3]

CATALOG NUMBER: 51-383



Immunohistochemistry of human prostate tissue stained using LYRIC Monoclonal Antibody.

Specifications

SPECIES REACTIVITY:	Human
TESTED APPLICATIONS:	ELISA, FACS, IHC, WB
APPLICATIONS:	LYRIC antibody can be used in ELISA starting at 1:000 - 1:1000, and immunohistochemistry starting at 10 ug/mL.
USER NOTE:	Optimal dilutions for each application to be determined by the researcher.
IMMUNOGEN:	Recombinant protein
HOST SPECIES:	Mouse

Properties

PURIFICATION:	Protein G Column
PHYSICAL STATE:	Liquid
BUFFER:	Liquid in PBS, 50% glycerol, 0.03% sodium azide
STORAGE CONDITIONS:	LYRIC antibody should be stored long term (months) at -20 °C and short term (weeks) at 4 °C. As with all antibodies avoid freeze/thaw cycles.
CLONALITY:	Monoclonal
ISOTYPE:	IgG1
CONJUGATE:	Unconjugated

Additional Info

ALTERNATE NAMES:	MTDH, 3D3, AEG1, AEG-1, Metadherin, LYRIC, Metastasis adhesion protein, Protein LYRIC
ACCESSION NO.:	Q86UE4
PROTEIN GI NO.:	56749088
OFFICIAL SYMBOL:	MTDH
GENE ID:	92140

Background

