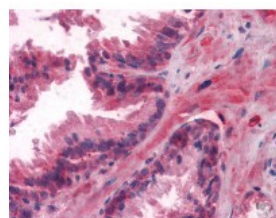




LCN1 Antibody [10B10]

CATALOG NUMBER: 51-376



Immunohistochemistry of human prostate tissue stained using LCN1 Monoclonal Antibody.

Specifications

SPECIES REACTIVITY:	Human
TESTED APPLICATIONS:	ELISA, IF, IHC, WB
APPLICATIONS:	LCN1 antibody can be used in ELISA starting at 1:000 - 1:1000, and immunohistochemistry starting at 10 ug/mL.
USER NOTE:	Optimal dilutions for each application to be determined by the researcher.
IMMUNOGEN:	Recombinant protein
HOST SPECIES:	Mouse

Properties

PURIFICATION:	Ascites
PHYSICAL STATE:	Liquid
BUFFER:	0.03% sodium azide
STORAGE CONDITIONS:	LCN1 antibody should be stored long term (months) at -20 °C and short term (weeks) at 4 °C. As with all antibodies avoid freeze/thaw cycles.
CLONALITY:	Monoclonal
ISOTYPE:	IgG1
CONJUGATE:	Unconjugated

Additional Info

ALTERNATE NAMES:	LCN1, Lipocalin 1, Lipocalin-1, Tear lipocalin, VEG protein, Von Ebner gland protein, PMFA, Tear prealbumin, Lipocalin 1 (tear prealbumin), TLC, TP, VEGP
ACCESSION NO.:	P31025
PROTEIN GI NO.:	401346
OFFICIAL SYMBOL:	LCN1
GENE ID:	3933

Background

