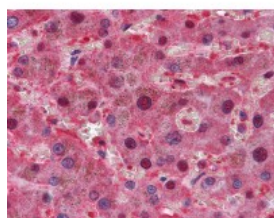




LPA Antibody [8F6A9,8H5C5]

CATALOG NUMBER: 51-371



Immunohistochemistry of human liver tissue stained using LPA Monoclonal Antibody.

Specifications

SPECIES REACTIVITY:	Human
TESTED APPLICATIONS:	ELISA, IHC, WB
APPLICATIONS:	LPA antibody can be used in Western Blot, and immunohistochemistry starting at 10 ug/mL.
USER NOTE:	Optimal dilutions for each application to be determined by the researcher.
IMMUNOGEN:	Recombinant protein
HOST SPECIES:	Mouse

Properties

PURIFICATION:	Ascites
PHYSICAL STATE:	Liquid
BUFFER:	0.03% sodium azide
STORAGE CONDITIONS:	LPA antibody should be stored long term (months) at -20 °C and short term (weeks) at 4 °C. As with all antibodies avoid freeze/thaw cycles.
CLONALITY:	Monoclonal
ISOTYPE:	IgG1
CONJUGATE:	Unconjugated

Additional Info

ALTERNATE NAMES:	LPA, AK38, Apo(a), Antiangiogenic AK38 protein, Apolipoprotein(a), Apolipoprotein (a), Lipoprotein a, Lipoprotein (a), Lp(a), APOA, Lipoprotein, Lp(a)
ACCESSION NO.:	P08519
PROTEIN GI NO.:	114062
OFFICIAL SYMBOL:	LPA
GENE ID:	4018

Background

