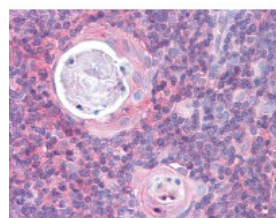




KARS Antibody [8G12C1]

CATALOG NUMBER: 51-364



Immunohistochemistry of human thymus tissue stained using KARS Monoclonal Antibody.

Specifications

SPECIES REACTIVITY:	Human
TESTED APPLICATIONS:	ELISA, IHC, WB
APPLICATIONS:	KARS antibody can be used in ELISA starting at 1:000 - 1:1000, and immunohistochemistry starting at 10 ug/mL.
USER NOTE:	Optimal dilutions for each application to be determined by the researcher.
IMMUNOGEN:	Recombinant protein
HOST SPECIES:	Mouse

Properties

PURIFICATION:	Ascites
PHYSICAL STATE:	Liquid
BUFFER:	0.03% sodium azide
STORAGE CONDITIONS:	KARS antibody should be stored long term (months) at -20 °C and short term (weeks) at 4 °C. As with all antibodies avoid freeze/thaw cycles.
CLONALITY:	Monoclonal
ISOTYPE:	IgG1
CONJUGATE:	Unconjugated

Additional Info

ALTERNATE NAMES:	KARS, CMTRIB, KARS1, KARS2, KRS, Lysine--tRNA ligase, LysRS, KIAA0070, Lysine tRNA ligase, Lysyl-tRNA synthetase
ACCESSION NO.:	Q15046
PROTEIN GI NO.:	20178333
OFFICIAL SYMBOL:	KARS
GENE ID:	3735

Background

