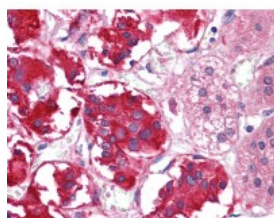




EPHB3 Antibody [4A122D1]

CATALOG NUMBER: 51-359



Immunohistochemistry of human adrenal tissue stained using EPHB3 Monoclonal Antibody.

Specifications

| | |
|-----------------------------|--|
| SPECIES REACTIVITY: | Human |
| TESTED APPLICATIONS: | ELISA, IHC, WB |
| APPLICATIONS: | EPHB3 antibody can be used in ELISA starting at 1:000 - 1:1000, and immunohistochemistry starting at 10 ug/mL. |
| USER NOTE: | Optimal dilutions for each application to be determined by the researcher. |
| IMMUNOGEN: | Recombinant protein |
| HOST SPECIES: | Mouse |

Properties

| | |
|----------------------------|---|
| PURIFICATION: | Ascites |
| PHYSICAL STATE: | Liquid |
| BUFFER: | 0.03% sodium azide |
| STORAGE CONDITIONS: | EPHB3 antibody should be stored long term (months) at -20 °C and short term (weeks) at 4 °C. As with all antibodies avoid freeze/thaw cycles. |
| CLONALITY: | Monoclonal |
| ISOTYPE: | IgG2a |
| CONJUGATE: | Unconjugated |

Additional Info

| | |
|-------------------------|---|
| ALTERNATE NAMES: | EPHB3, Cek10, ETK2, HEK2 protein kinase, Embryonic kinase 2, EPH receptor B3, EPH-like kinase 2, Ephrin type-B receptor 3, MDK5, Sek4, TYRO6, EK2, EPH-like tyrosine kinase 2, EPH-like tyrosine kinase-2, HEK2, Human embryo kinase 2, Tyrosine-protein kinase TYRO6 |
| ACCESSION NO.: | P54753 |
| PROTEIN GI NO.: | 76803655 |
| OFFICIAL SYMBOL: | EPHB3 |
| GENE ID: | 2049 |

